



TFF, 2 Haven Green, London, W5 2UU

Set in a grand Victorian building, this two-bedroom top floor apartment spans the entire depth of the building, providing a stunning east-west dual aspect looking directly onto Haven Green. The property is literally moments from the Ealing Broadway station and is also exceptionally close to Dickens Yard with its multitude of restaurant and social appeal.

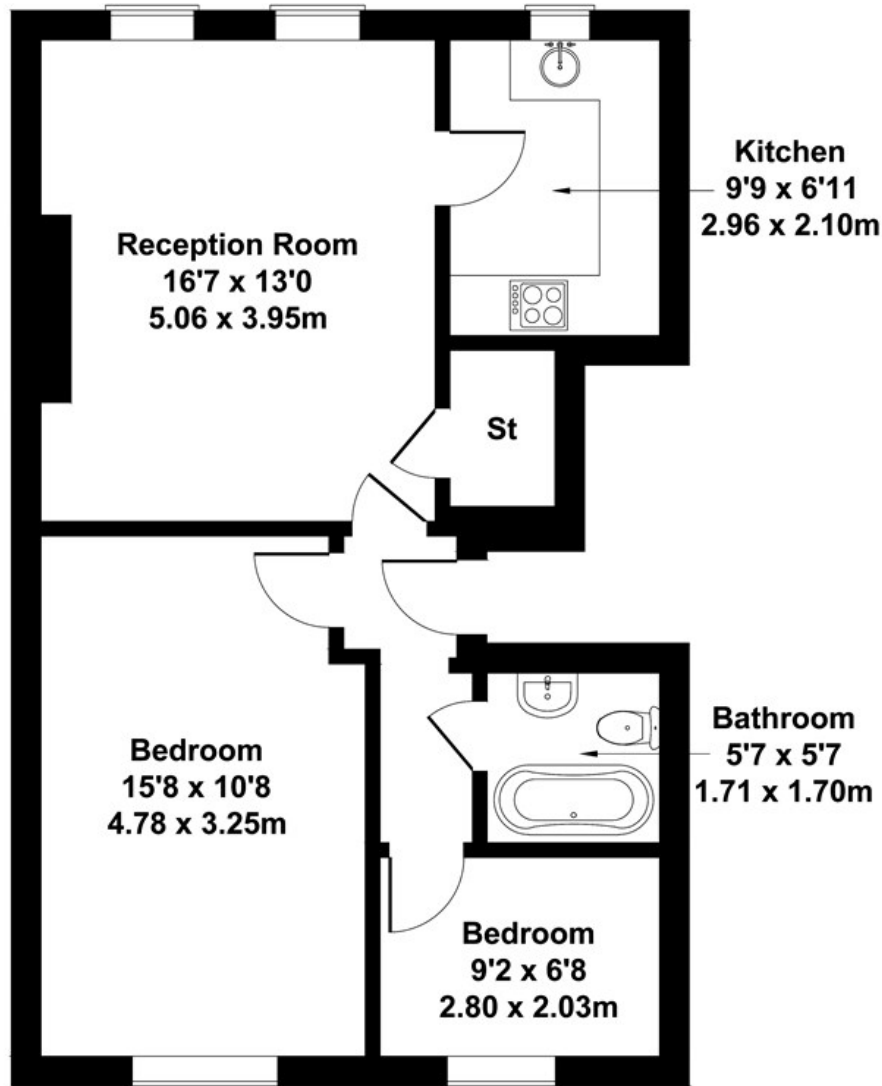
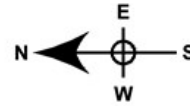
This property comes with a share of the building's freehold title, and is offered chain free to the market.

£449,995

- Period conversion
- Top floor flat
- Two bedrooms
- Share of freehold
- Sought after location
- Ealing Broadway
- No Chain
- Close to transport links
- Crossrail
- Good storage

Haven Green

Approximate Gross Internal Area
624 sq ft - 58 sq m



SECOND FLOOR

Not to Scale. Produced by The Plan Portal 2022
For Illustrative Purposes Only.

Energy Efficiency Rating		
	Current	Potential
<i>Very energy efficient - lower running costs</i>		
(92 plus) A		
(81-91) B		
(69-80) C		
(55-68) D		
(39-54) E		
(21-38) F		
(1-20) G		
<i>Not energy efficient - higher running costs</i>		
England & Wales	EU Directive 2002/91/EC	